



**4, Parkgate Road, Battersea, London, SW11 4PJ**

**£600 Per Week**

VIDEO VIEWING AVAILABLE:

Bright two-bedroom apartment situated on the first floor of this contemporary block overlooking Battersea Park. Comprising of two double bedrooms, separate kitchen, bathroom with overhead shower and a larger reception room. This property has been well maintained and benefits from access to a communal roof terrace and lift.

\*\*\*Suitable for Students\*\*\*

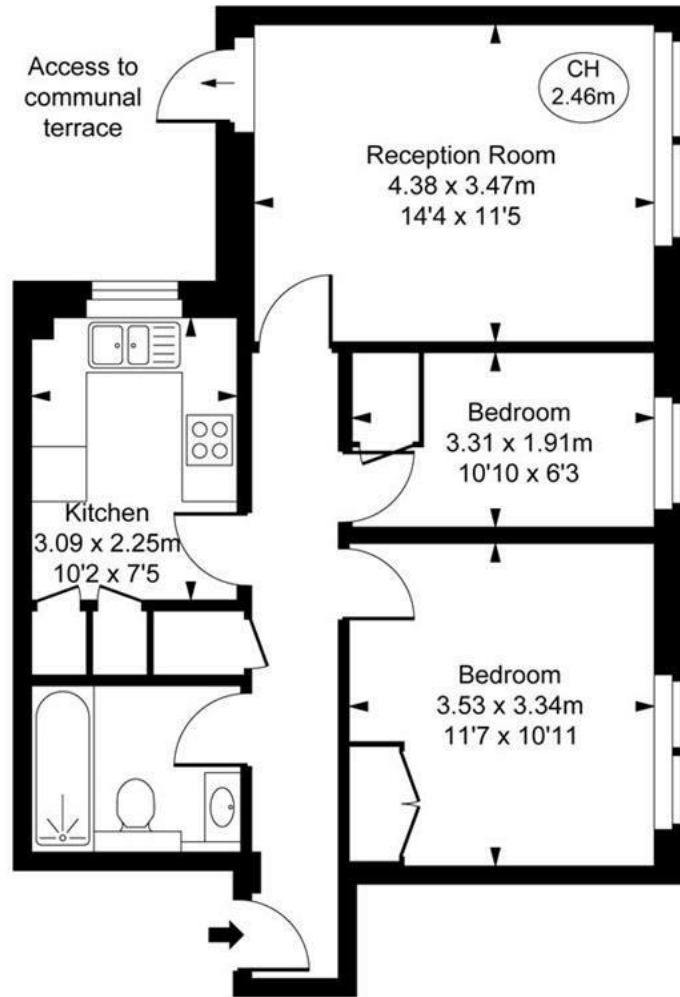
St Mary Le Park Court is located just a stone's throw away from Battersea Park and just a few moments away from Kings Road in Chelsea which is home to a range of boutique shops and restaurants.

- Two Bedrooms
- Large Reception
- Separate Kitchen
- Wood Flooring Throughout
- Modern Bathroom
- Lots of Natural Light
- Overlooking Battersea Park
- Close Proximity to Kings Road in Chelsea



St Mary Le Park Court,  
Parkgate Road, SW11  
Approximate Gross Internal Area  
56.02 sq m / 603 sq ft

( CH = Ceiling Heights )



First Floor

This plan is not to scale. It is for guidance and not for valuation purposes.  
All measurements and areas are approximate only, and have been prepared in accordance with the current edition of the RICS Code of Measuring Practice.  
© Fulham Performance

Energy Efficiency Rating		Current	Potential
Very energy efficient - lower running costs			
(92 plus) A			
(81-91) B			
(69-80) C			
(55-68) D		56	76
(39-54) E			
(21-38) F			
(1-20) G			
Not energy efficient - higher running costs			
England & Wales		EU Directive 2002/91/EC	

Environmental Impact (CO <sub>2</sub> ) Rating		Current	Potential
Very environmentally friendly - lower CO <sub>2</sub> emissions			
(92 plus) A			
(81-91) B			
(69-80) C			
(55-68) D			59
(39-54) E		38	
(21-38) F			
(1-20) G			
Not environmentally friendly - higher CO <sub>2</sub> emissions			
England & Wales		EU Directive 2002/91/EC	

Admin fee: £ inclusive of VAT | Reference Fee: £ inclusive of VAT per application | Inventory Fee may also apply